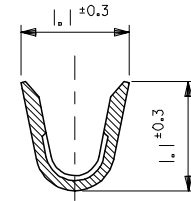
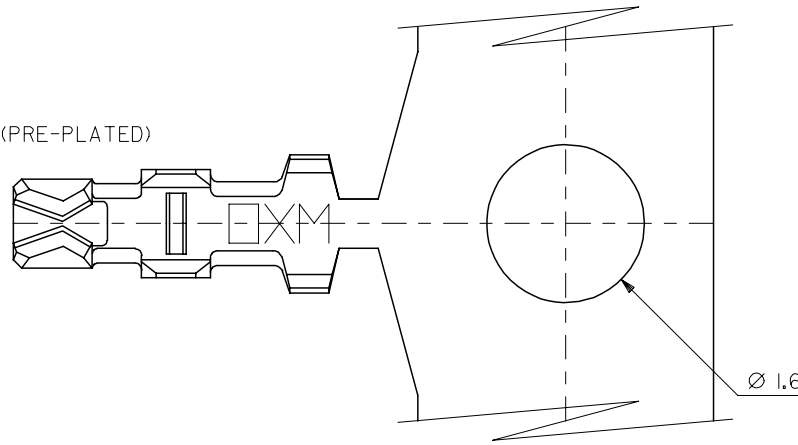


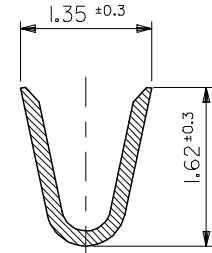
10 9 8 7 6 5 4 3 2 1

注記
NOTES

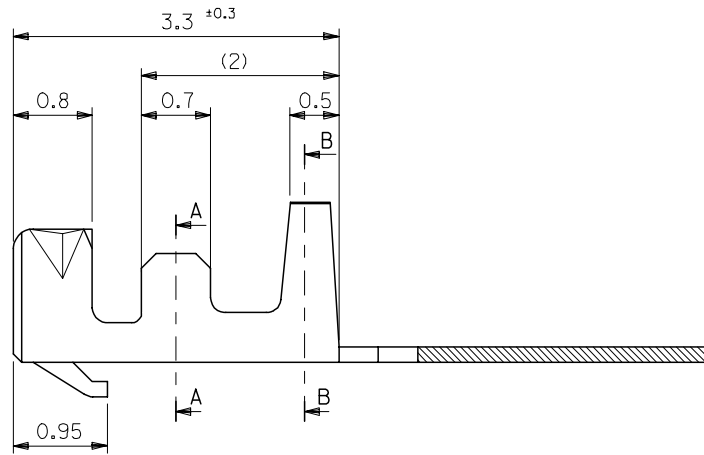
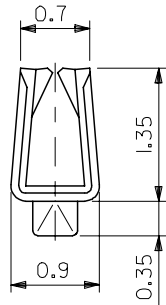
- 適合ハウジング：51021シリーズ
APPLICABLE HOUSING : 51021 SERIES
- メッキ仕様 PLATING
錫 0.9μm MIN. リフロー処理 (前メッキ)
TIN 0.9μm MIN. REFLOW TREATMENT (PRE-PLATED)



SECT. A-A



SECT. B-B



50079-8100	バラ状 LOOSE
50079-8000	連鎖状 CHAIN
MATERIAL NO.	端子形状 FORM

MODEL NO. 50079-8*00

材料 MATERIAL リン青銅 (t=0.15) PHOSPHOR BRONZE 仕上げ FINISH —#— 適用電線範囲 WIRE RANGE AWG #26-28 被覆外径 INS. RANGE φ0.5-1.04	REVISED EC NO: J2005-1535 DRAWN:SUZUKI 2004/11/30 CHKD:KTOJO 2004/11/30 APPR:NUKITA 2004/12/06 G	GENERAL TOLERANCES (UNLESS SPECIFIED)		DIMENSION STYLE MM ONLY	SCALE 20:1	DESIGN UNITS METRIC	THIRD ANGLE PROJECTION	
		10 UNDER	±0.2	DRAWN BY HHIRAMOT	DATE 92/10/21	TITLE 1.25 WIRE TO BOARD CONN. CRIMP REC. TERMINAL -LEAD FREE-		
		10 OVER 30 UNDER	±0.25	CHECKED BY SKUNISHI	DATE 98/07/07			
		30 OVER	±0.3	APPROVED BY MFUKUSHI	DATE 98/07/07	MOLEX INCORPORATED		
ANGULAR ±3 °		DRAFT WHERE APPLICABLE MUST REMAIN WITHIN DIMENSIONS		MATERIAL NO. SEE CHART		DOCUMENT NO. SD-50079-001	SHEET NO. 1 OF 1	
SIZE A3 THIS DRAWING CONTAINS INFORMATION THAT IS PROPRIETARY TO MOLEX INCORPORATED AND SHOULD NOT BE USED WITHOUT WRITTEN PERMISSION								

10 9 8 7 6 5 4 3 2 1

F

F

E

E

D

D

C

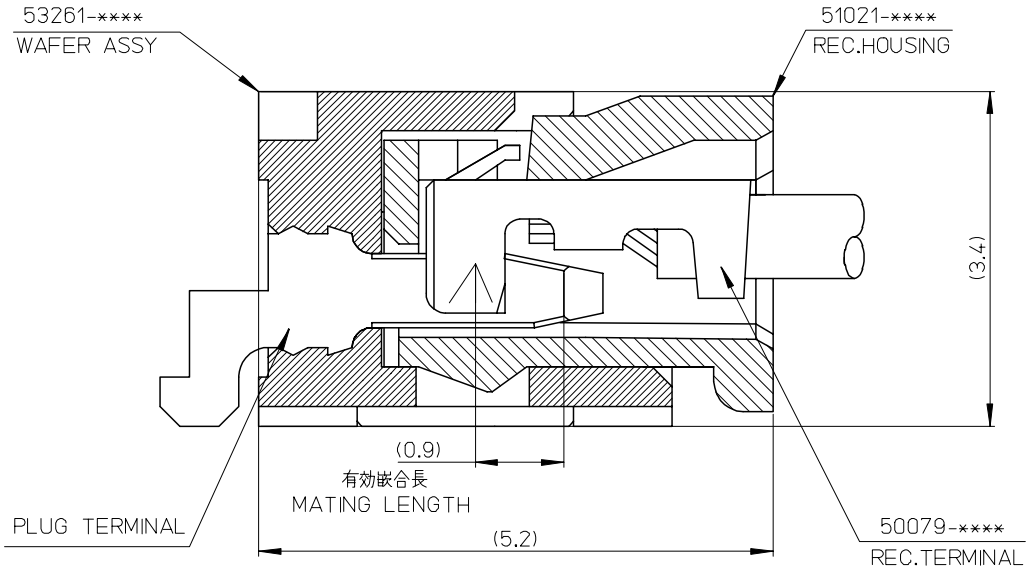
C

B

B

A

A



53261-****	WAFER ASSY	MODEL NO./MATERIAL NO.
50079-****	TERMINAL	
51021-****	HOUSING	

RELEASED EC NO: J2006-2426 DRWN: A0YAGI 2006/02/02 CHKD: YMAEDA 2006/02/03 APPR: NUKITA 2006/02/07	GENERAL TOLERANCES (UNLESS SPECIFIED)		DIMENSION STYLE MM ONLY		SCALE ---	DESIGN UNITS METRIC	THIRD ANGLE PROJECTION	
	10 UNDER	± ---	DRAWN BY Y. A0YAGI	DATE 2006/01/30	TITLE 1.25 W-TO-B CONN. 51021,53261 MATING CROSS SECTION			
	10 OVER 30 UNDER	± ---	CHECKED BY Y. MAEDA	DATE 2006/01/30	APPROVED BY N. UKITA			
	30 OVER	± ---	APPROVED BY N. UKITA		DATE 2006/01/30	MOLEX INCORPORATED		
	ANGULAR	± --- °	MATERIAL NO.		DOCUMENT NO. SD-51021-002	SHEET NO. 1 OF 1		
0	REV	DRAFT WHERE APPLICABLE MUST REMAIN WITHIN DIMENSIONS		SEE CHART		THIS DRAWING CONTAINS INFORMATION THAT IS PROPRIETARY TO MOLEX INCORPORATED AND SHOULD NOT BE USED WITHOUT WRITTEN PERMISSION		

9

8

7

6

5

4

3

2